

Understanding Your Micro-Irrigation Systems



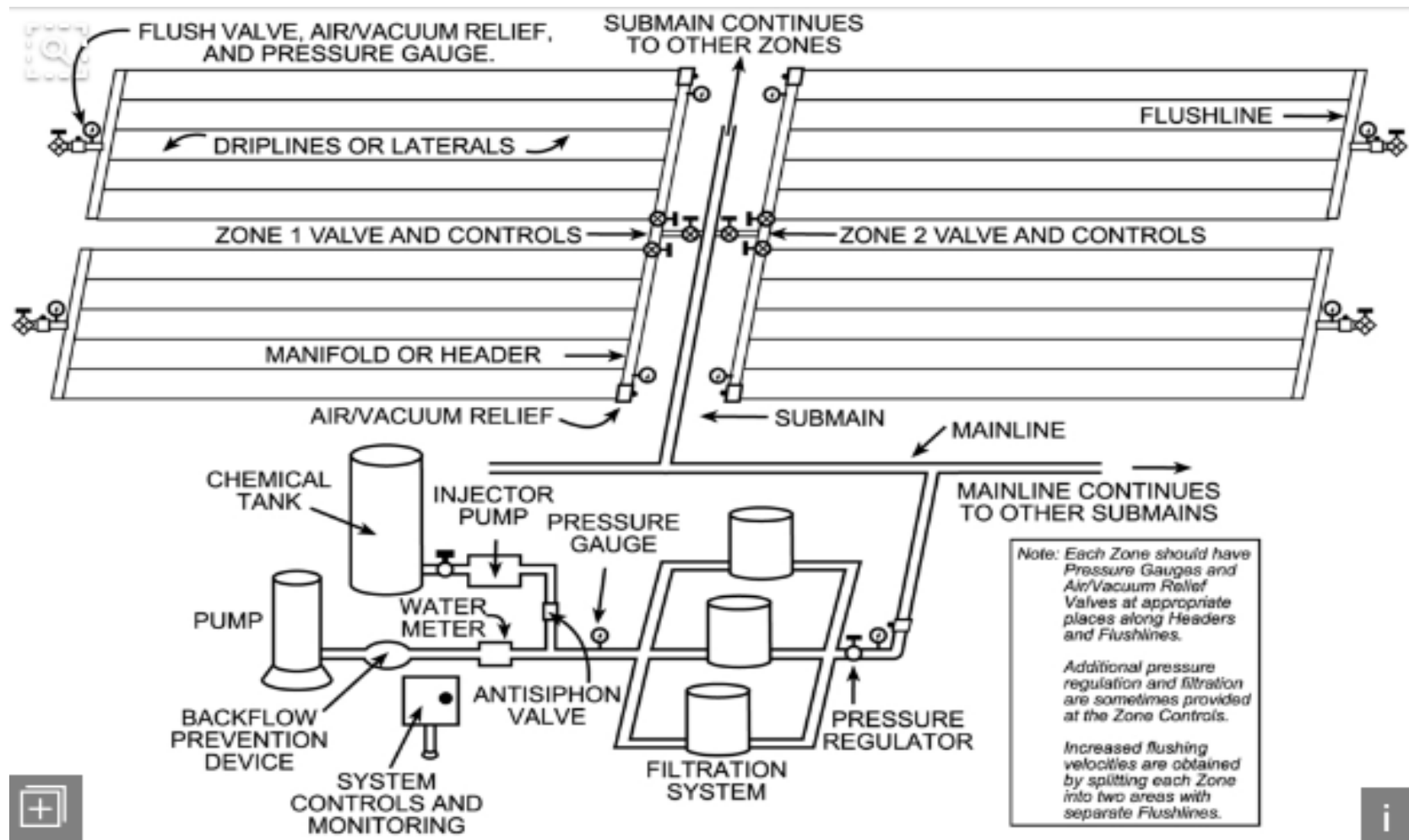
The System

- How does the difference in DU effect the farm
 - 85% compared to 95%
 - Average is 6 hrs. a week of run time up to 160 hrs.
 - \$200 to \$500 an acre per year
- Running outside of the system Design effects the DU
 - Low pressure
 - Larger Sets
 - Effect up to 20% difference
- Largest factor in DU falling off is poor Maintenance

Commonly known 'Maintained' objects

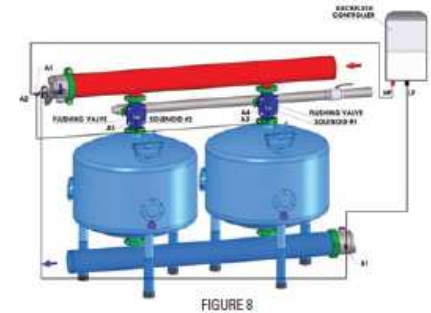
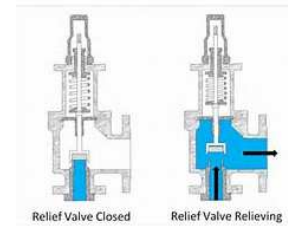
- **The Human body**
 - Teeth, Bathing, Exercise, Diet
- **Recreation**
 - Swimming Pools, Hot Tubs, Sports Fields
- **Professions**
 - Vehicles, Heavy Equipment, Tractors

Micro-Irrigation Components that require maintenance



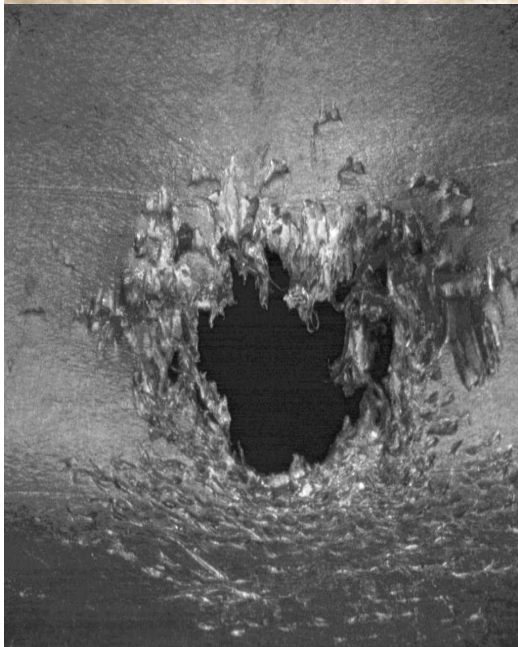
Micro-Irrigation Components that require maintenance

- Primary Filtration
- Chemigation Check Valves
- Pressure Relief Valves
- **Air Vents**
- Mainlines
- Submains
- In-Field Hydraulic Valves



Emission Devices





Production Agriculture

- Micro-Irrigation Systems Make Farmers \$\$\$
 - What happens when Maintenance gets neglected?
 - Irrigation performance goes down
 - System Uniformities go down
 - Yields are affected negatively
 - Revenue goes down
 - Net Profit goes down
- Maintain your systems for longer life and optimum profits for the farm

For more information...

NETAFIM™

NETAFIM USA AGRICULTURE GREENHOUSE LANDSCAPE WASTEWATER MINING WORLDWIDE

HOME ABOUT US CALENDAR EDUCATION CAREERS

GROW MORE WITH LESS

SEARCH

ENTIRE SITE

CHOOSE YOUR DIVISION:

AGRICULTURE GREENHOUSE & NURSERY LANDSCAPE & TURF WASTEWATER MINING

Visit <http://www.netafimusa.com>

Thank You any Questions

